

# MONTHLY MEMBERSHIP PROGRESS REPORT

LOCATION PENNSYLVANIA

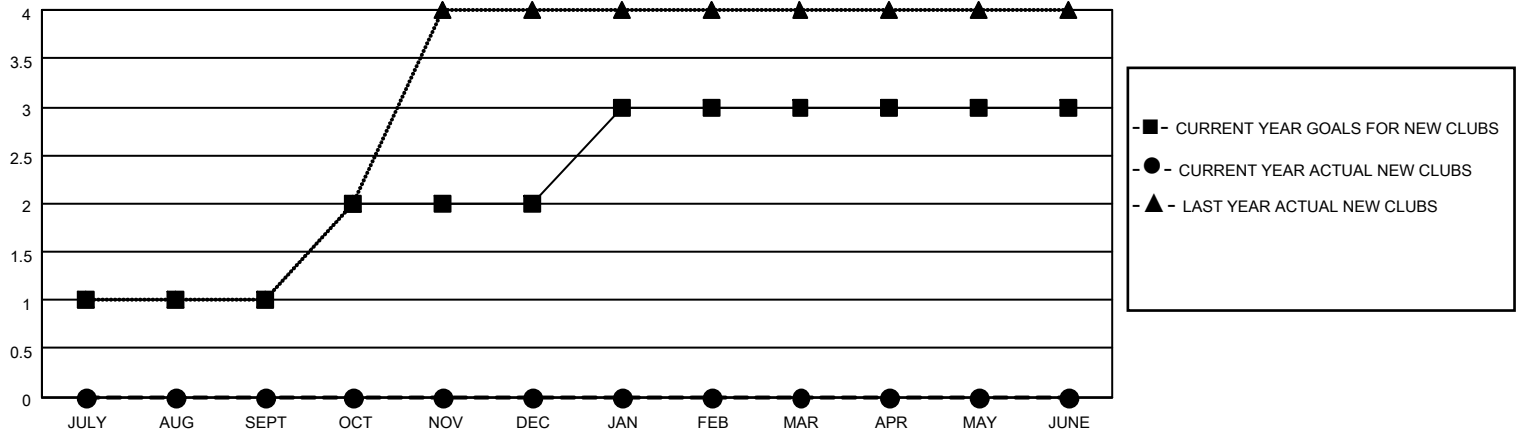
District 14 A

Results as of: 9/30/2021

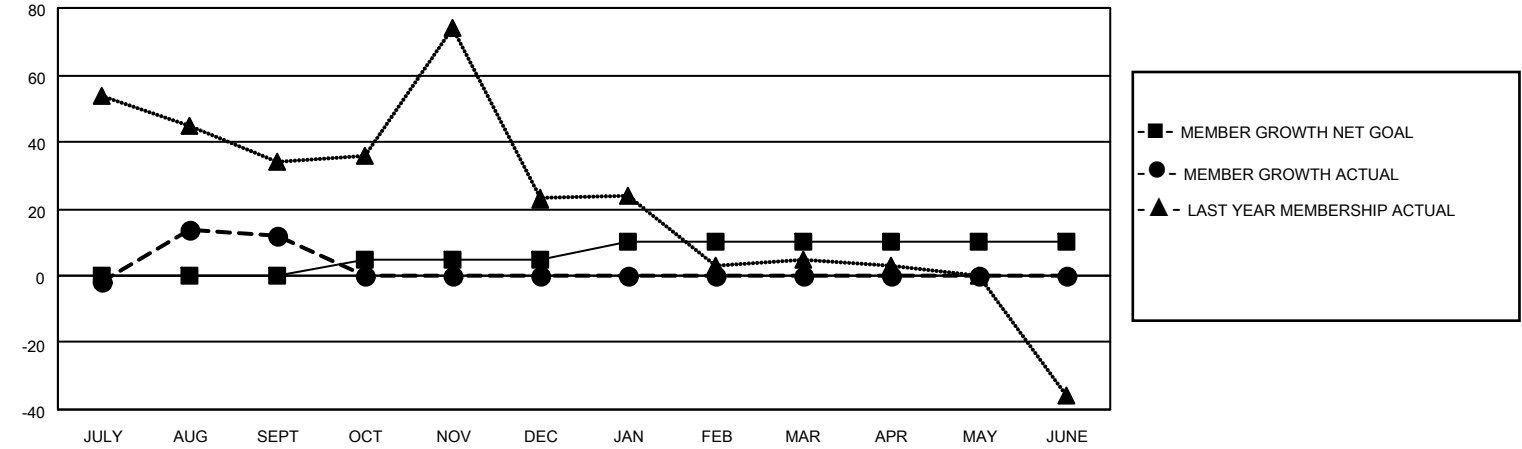
Clubs			
RESULTS FOR 2021-2022			
QUARTER	NEW CLUB GOAL	NEW CLUBS	DROPPED CLUBS
JULY/AUG/SEPT	1	0	2
OCT/NOV/DEC	1	0	0
JAN/FEB/MAR	1	0	0
APR/MAY/JUNE	0	0	0

Members			
RESULTS FOR 2021-2022			
QUARTER	MEMBER GROWTH NET GOAL	MEMBER GROWTH ACTUAL	DROPPED MEMBERS ACTUAL (including transfers)
JULY/AUG/SEPT	0	53	37
OCT/NOV/DEC	5	0	0
JAN/FEB/MAR	5	0	0
APR/MAY/JUNE	0	0	0

**GOALS AND ACTUAL NEW CLUBS CUMULATIVE**



**GOALS AND ACTUAL MEMBERS CUMULATIVE**



**DROPPED CLUBS: 2**

**8 CLUBS OF 63 ADDED 1 OR MORE NEW MEMBERS**

**GENDER DISTRIBUTION**

MALE	948 (64.71%)
FEMALE	517 (35.29%)
NON BINARY	0 (0.00%)
PREFER NOT TO ANSWER	0 (0.00%)

**DROPPED MEMBERS**

[CLICK HERE FOR CUMULATIVE MEMBERSHIP DATA](#)

DECEASED	3
CLUB CANCELLED	23
OTHER	11
<b>TOTAL</b>	<b>37</b>

TOTAL FAMILY UNIT MEMBERS 226

FAMILY MEMBERS PAYING HALF DUES 118